

Europe's Parking U-Turn

Michael Kodransky
Bogota, Colombia
June 2013



ITDP

Institute for Transportation
& Development Policy

13195. West Main St. looking West, Durham, N. C.

Photo Supplied
Lambert



Oversupply of Surface Parking



Durham, North Carolina, USA







Why do Danes cycle?

1%

Environment

6%

Cheap

19%

Exercise

61%

Convenient, Fast
and Easy

Copenhagen Bicycle
Account 2006





Copa Cava

mparier

SUSPENS

STREET LIGHTS



Breda, The Netherlands



BEFORE



AFTER

Pricing Matters



No meters



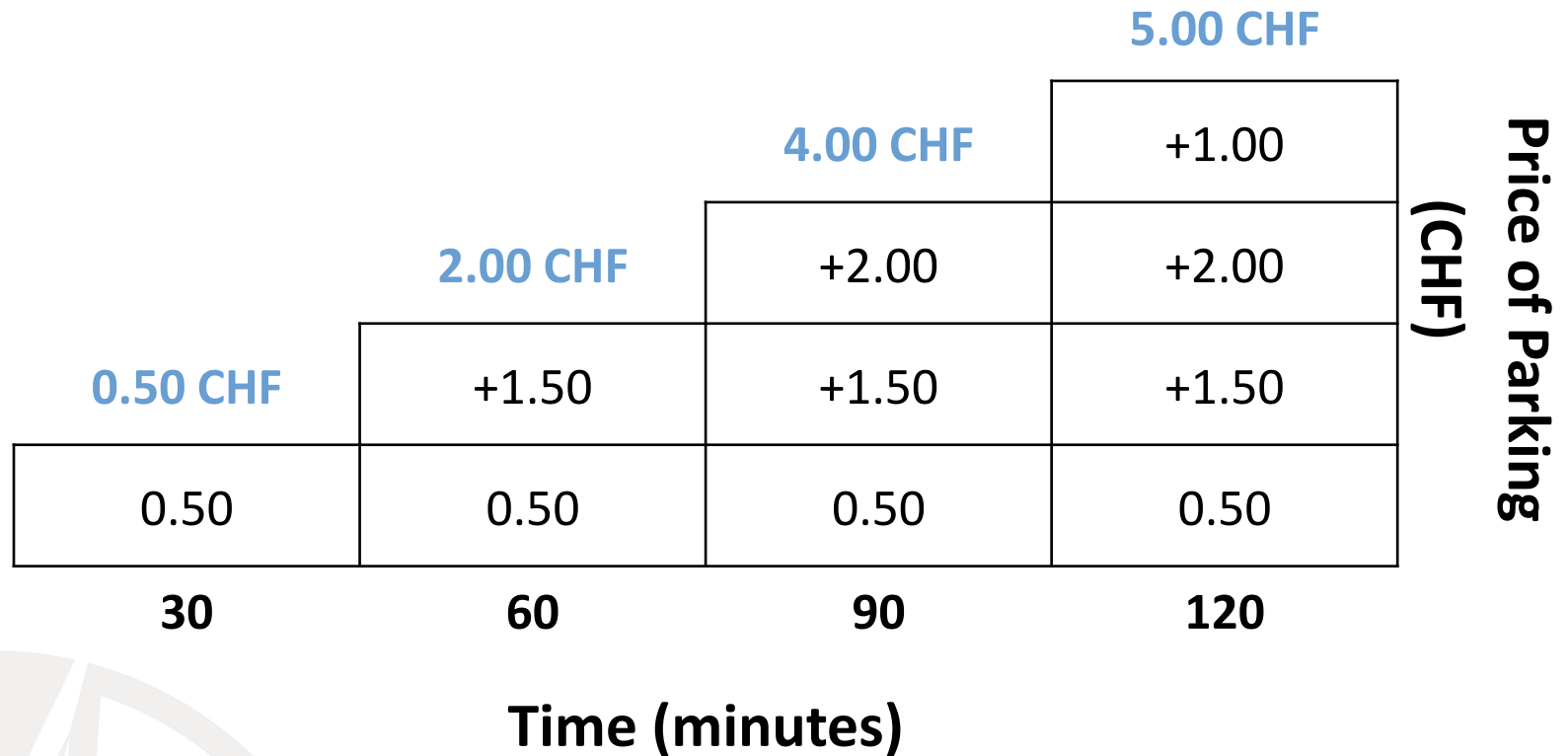
Meters



Prices quadrupled

Grosvenor Square in London

Zurich Progressive Parking Charges



Earmarking/Ring fencing Parking Funds

London:

Freedom Passes

- Elderly and disabled ride for free

Barcelona:

Bicing Bicycle Share Program

- First city to use 100% of surplus from on-street parking fees to finance a public bicycle sharing scheme—Bicing. Antwerp to follow.

Antwerp:

- Parking fines are invested into public transport



Parking Benefits Districts



Boulder, Colorado, USA

Amsterdam Residential Parking Permits



London Borough of Camden

CO₂ Based Residential Parking Permit Costs

	Vehicle Cylinder Capacity (cc)	CO ₂ Emissions (g/km)	3 month	6 month	12 months
Motor Vehicle	0-1299	up to 150	£30.50	£48.00	£82.00
	1300-1849	151-185	£35.50	£56.50	£97.50
	1850-2449	186-224	£41.00	£67.50	£118.00
	2450+	225+	£53.00	£89.00	£159.00
Motorcycle	n/a	n/a	n/a	£25.00	£47.00
Electric Vehicle	n/a	n/a	£6.50	£12.00	£22.50

“The walking distance to a parking place has to be *at least as long as* the walking distance to the public transport stop”
– Hermann Knoflacher, Inventor of Walkmobile



In the Name of Zoning: Parking Codified



Denver

Parking Podiums



Chicago



Bangkok



Supply Caps

Hamburg: Sealed inventory in Central Business District at roughly 30,000 spaces in 1976

Zurich: “Historic Compromise” instituted in 1996

New York/Boston: Compliance with Clean Air Regulations in 1970s



Transit Access and Parking Standards

Paris:

100% discount if a development is 500 meters from a metro stop.

Strasbourg:

50% discount if development less than 500 meters from a public transportation stop.



Existing Supply Scan

Stockholm:

Developers contact Stockholm Parkering to help find available parking spaces off-site to satisfy parking regulations.

Strasbourg:

When building permits are granted, construction projects clustered in an area are analyzed and unused spaces nearby are shared or consolidated.



Illegal Parking & Enforcement

Amsterdam Scan Car

- 6 cameras (3 on each side)
- Moves at 40 km/hr
- Takes 160 photos/sec
- 3 wardens on scooters follow
- 98% accuracy



Paris: On-Street Parking Best Practice



Paris On-Street Space Reclamations

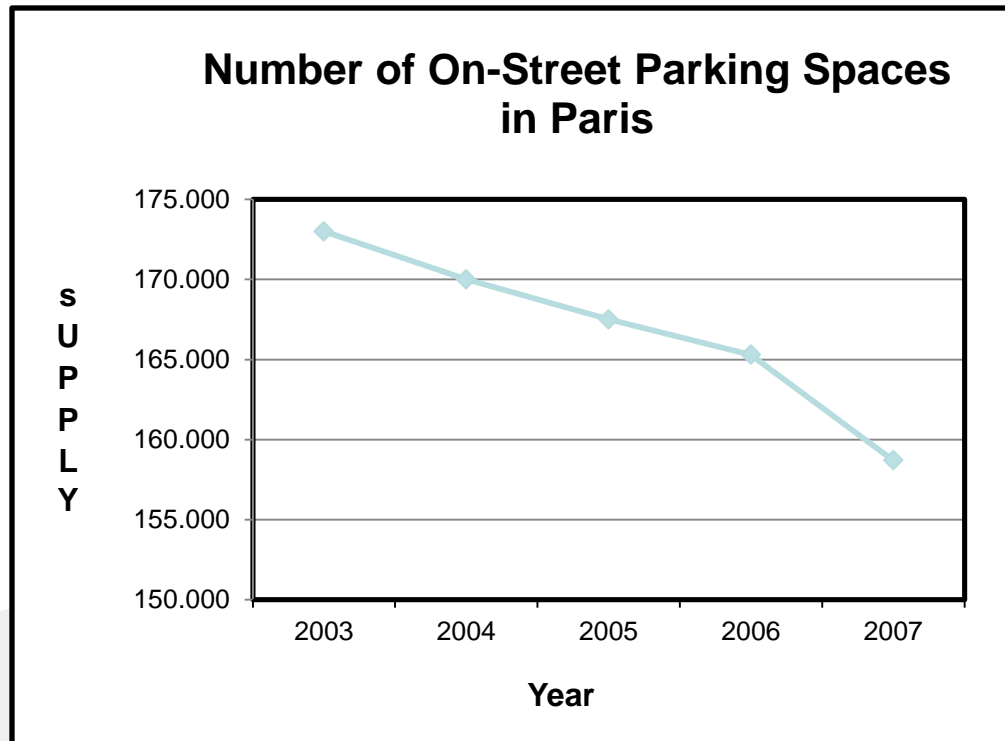
4,000 removed to accommodate 1,451 new Velib stations that hold about 20,000 public rental bikes.

>100 km of new bicycle lanes installed.

Space was also reallocated for motorcycle parking, bicycle parking, disabled parking and tramway corridor access.



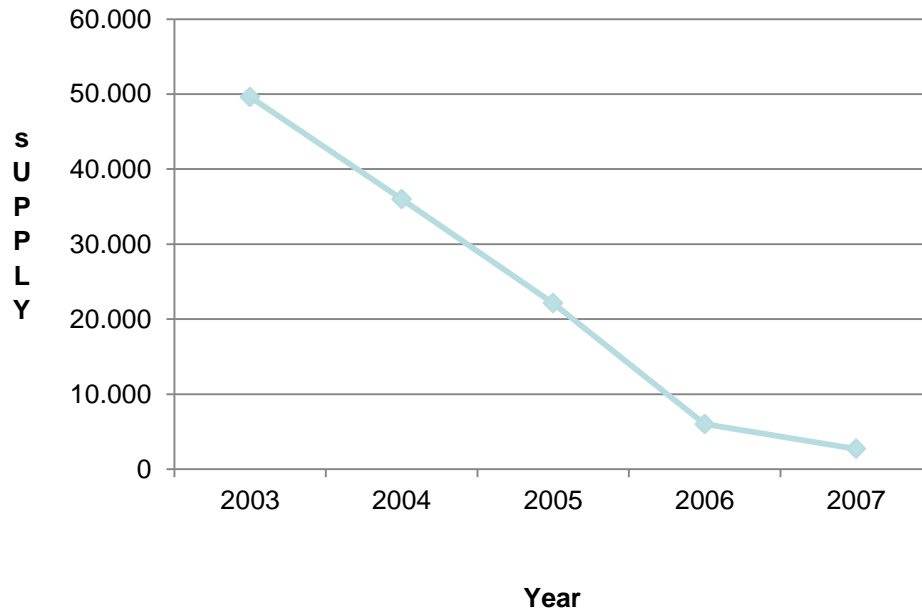
Paris On-Street Parking Supply Trend



Data Source: Paris Transport and Travel Report (2007)

Overall on-street parking supply was reduced by **9%** (14,300 spaces)

Free Parking Spaces in Paris

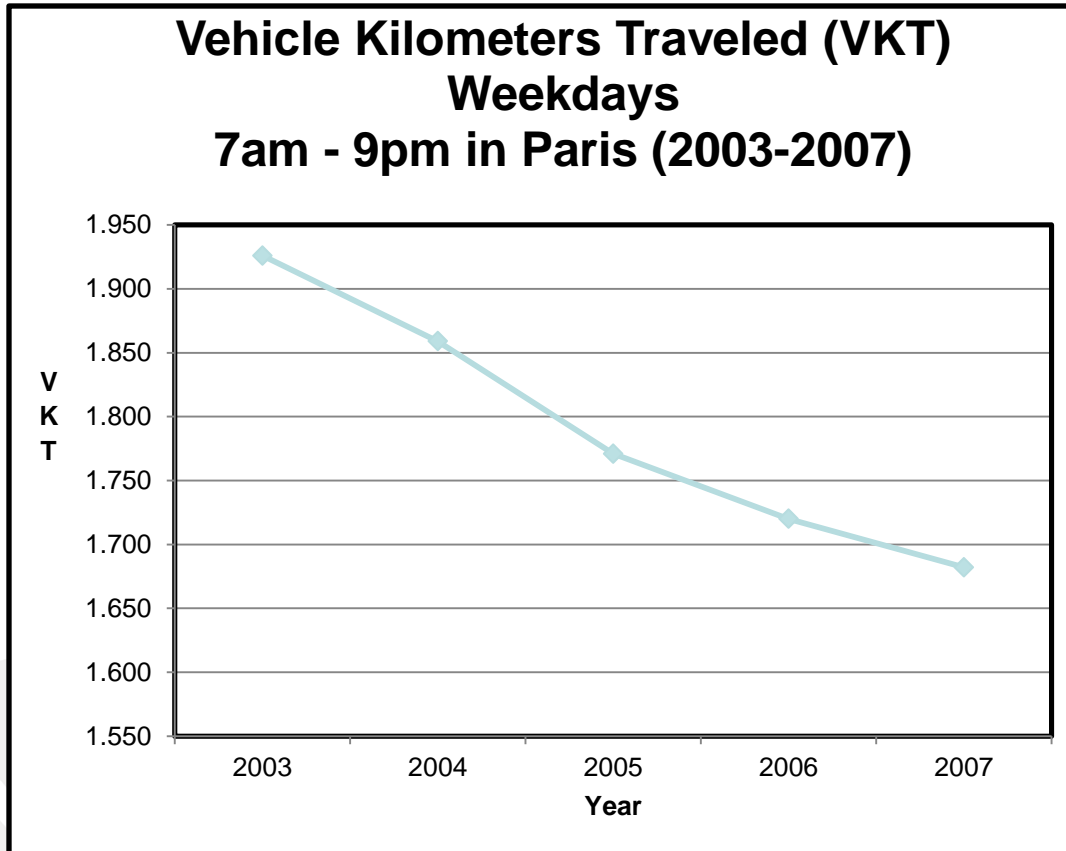


Data Source: Paris Transport and Travel Report (2007)



95% of free spots were turned into paid parking spaces

Impact of Paris Parking Reforms



- VKT: ↓ by **13%**

- Share of private vehicles in traffic: ↓ **68% to 60%**





- Cyclists shifting from car commuting: **5%**

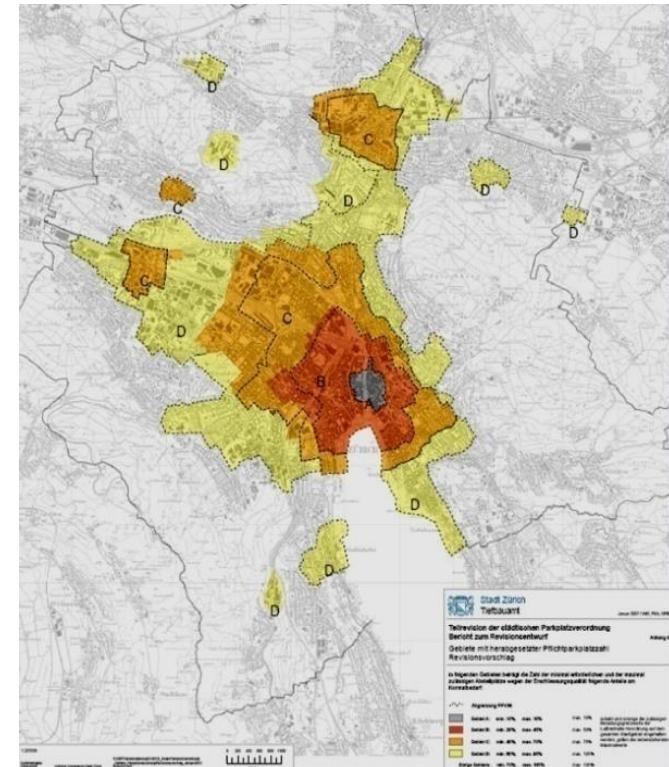
Data Source: Paris Transport and Travel Report (2007)

Zurich: Off-Street Parking Best Practice



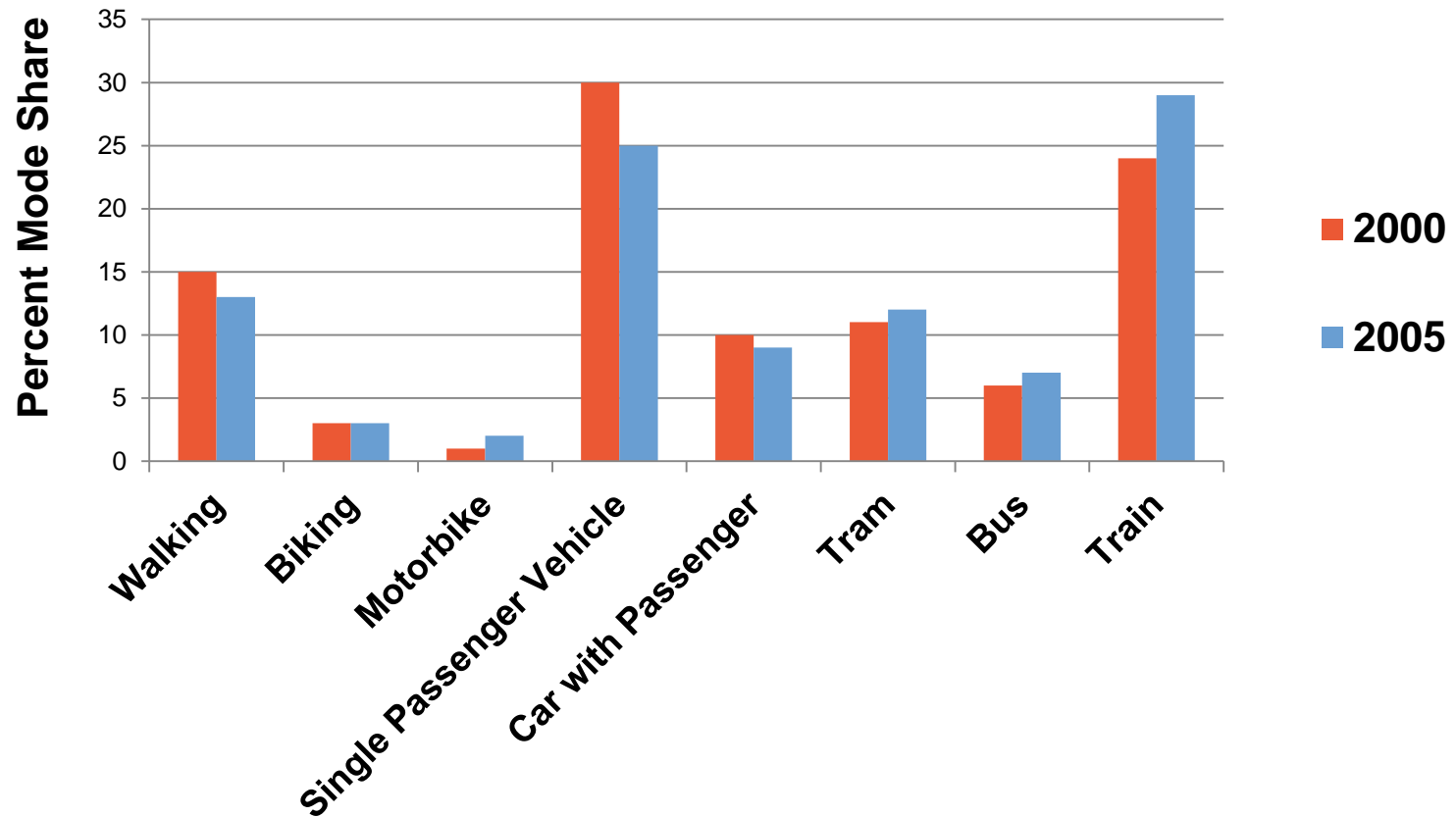
Parking Requirements Based on Access to Transit

	Area	Minimum (%)	Maximum (%)	*Maximum 2 (%)
	A	10	10	10
	B	25	45	50
	C	40	70	75
	D	60	95	105
Remaining Areas		70	115	130



*Related to clean air regulations and road capacity

Zurich Mode Split Trend (2000 & 2005)



Street Design



Play Street



Antwerp, Belgium



Copenhagen, Denmark

Parking Protected Cycle Path



Munster, Germany

“Park Once” Facility at Multi-Modal Station



Hamburg, Germany (Altona District)

Connect with us:

- ITDP.org
- mkodransky@itdp.org
- [@ITDP_HQ](#), [@mkodransky](#)
- facebook.com/ITDP.org
- youtube.com/ITDP1
- flickr.com/itdp

